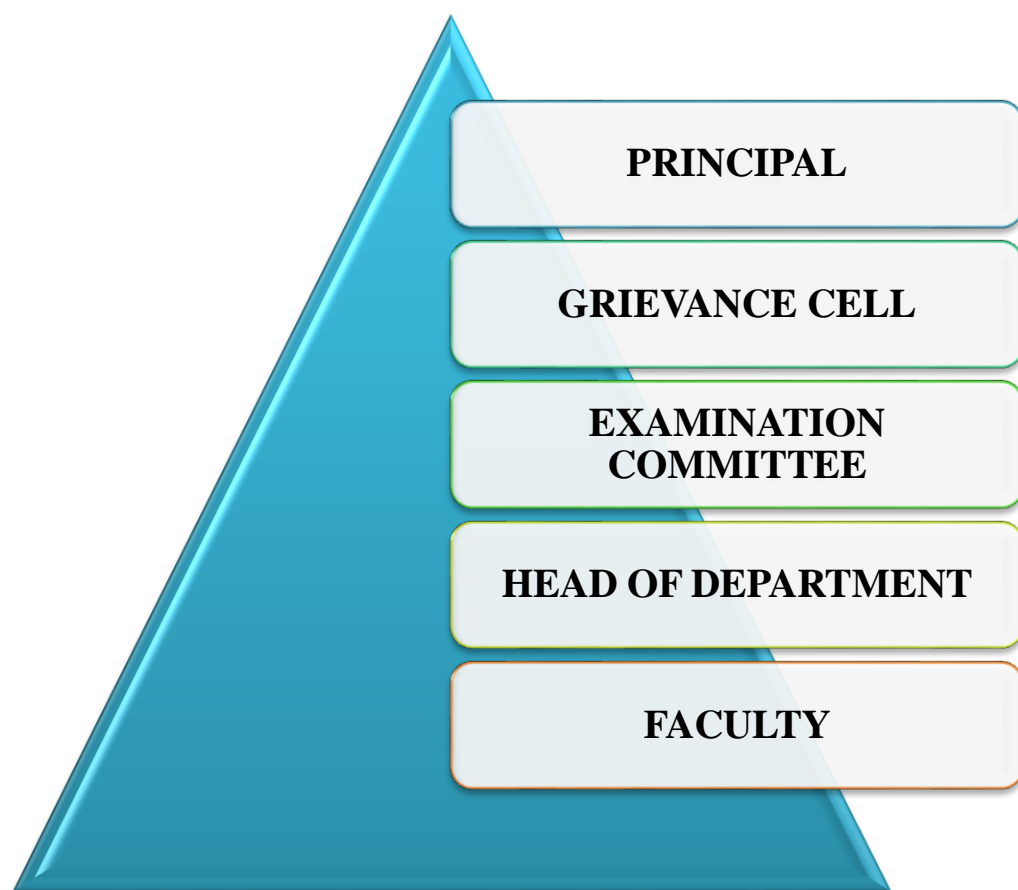


# **Sri Bhagawan Mahaveer Jain First Grade College**

Geetha Road, Robertsonpet, Kolar Gold Fields.



**HIERARCHY TO RESOLVE EXAMINATION RELATED  
GRIEVANCES**

## EXAMINATION RELATED GRIEVANCES

**2014-19**

| <b>YEAR</b>    | <b>EXAM RELATED GRIEVANCES</b>   | <b>ACTION TAKEN</b>  |
|----------------|--|--|
| <b>2018-19</b> | Teaching classes in the afternoon session following the exams conducted in the forenoon session\                 | The classes in the afternoon session were suspended as requested by the students to prepare for the next day's exam  |
| <b>2017-18</b> | Mistakes in valuation of scripts regarding wrong totaling and valuation  | Concerned faculty reviewed the scripts   |
| <b>2017-18</b> | Complaints from some of the parents against the Attendance Absentee Status                                       | The parents who complained were found to have new phone numbers which were not registered. These were taken from them and their wards' Attendance status were forwarded to them. |
| <b>2016-17</b> | Difference in the pattern of question papers   | Heads of the departments had discussions with the departmental members to set papers as per CBCS requirements  |
| <b>2016-17</b> | Seating arrangement  | Arrangements made such that no two students appearing for the same subject exam were seated next to each other.  |
| <b>2015-16</b> | Students complained about early exit of Half-an-hour as per the university norms not followed in the examination | Examination Committee decided to look into the matters and to find the concrete solution.  |
| <b>2015-16</b> | Insufficient seating arrangement in some of examination halls  | The Examination Committee took extra care to prepare the seating plan ensuring every student is taken care of.   |
| <b>2014-15</b> | Mistakes in valuation of scripts regarding wrong totaling and valuation  | Concerned faculty reviewed the scripts   |
| <b>2014-15</b> | Students found that the Question paper in few subjects were lengthy and time taking to be answered               | The matter was referred to the respective Head of the Departments where the questions papers were found to be lengthy.   |